

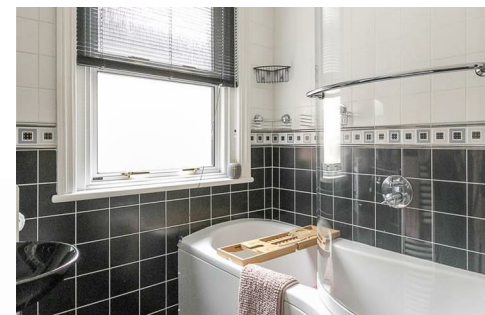
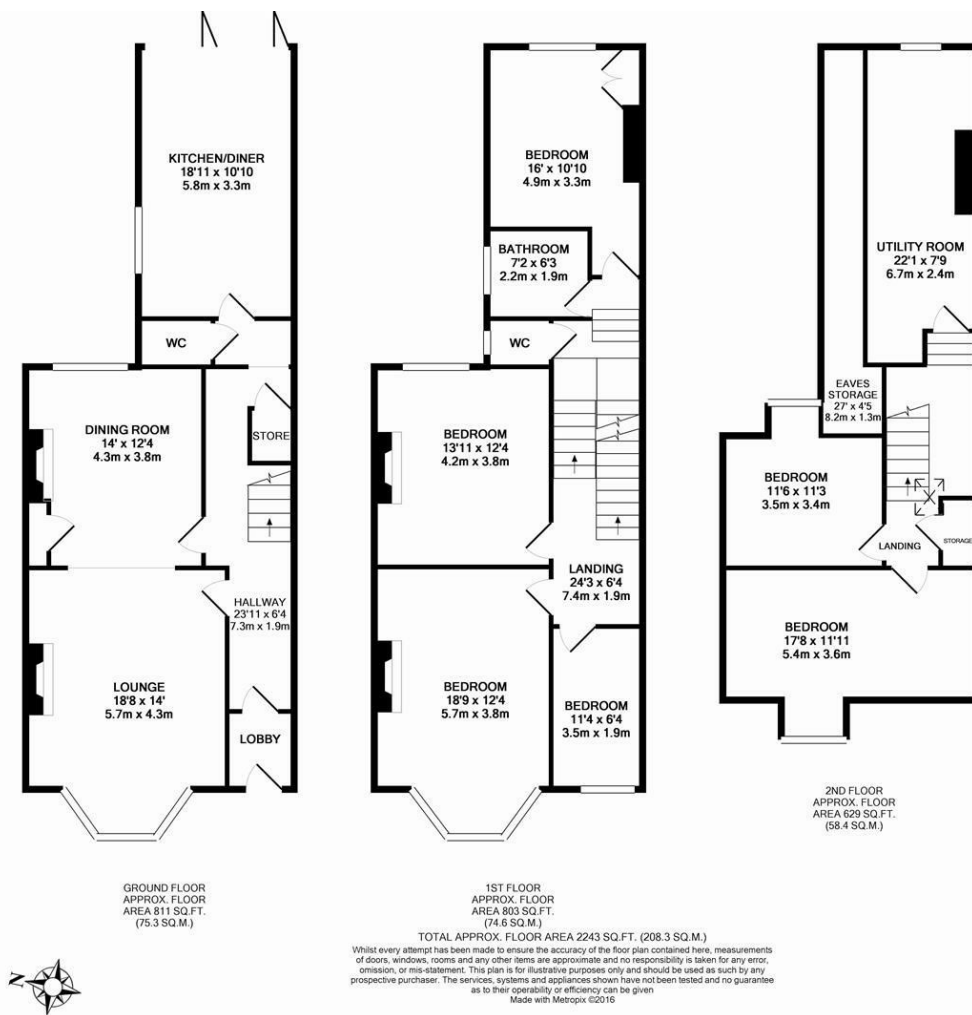


Well presented and with period features in abundance! This three storey, Victorian mid terrace was thought to have been designed in 1899 by local architects Cackett & Burns Dick. Known for the design of buildings such as the Laing Art Gallery, Newcastle University's Students Union and the twin towers of the iconic Tyne Bridge. Centrally located within Gosforth on Rothwell Road, close to excellent local schools and a stones throw from Gosforth High Street with its array of local shops, cafés, restaurants and transport links into the city and beyond.

Boasting in excess of 2,200 Sq ft, the accommodation briefly comprises; entrance lobby through to entrance hall with under stairs store; lounge with walk-in bay, polished wooden flooring, period fireplace and decorative ceiling open to dining room, again with period fireplace, decorative ceiling, storage to alcove and polished floor boards; 18ft kitchen/diner with granite worktops, tiled floor and folding doors out onto the decked terrace; w/c to the ground floor. The first floor landing gives access to four bedrooms, three of which are comfortable doubles, bedroom one with walk-in bay, decorative ceiling and period fireplace; bathroom with separate w/c. To the second floor, two further double bedrooms can be found, both with eaves storage and dormer windows, the larger of the two occupying the full-width of the house and a utility/store room (previously bedroom seven) over the half landing measuring 22ft in length.

Externally a generous town garden to the front and an enclosed rear decked patio area with walled boundaries. With double-glazed windows and gas central heating, an early internal inspection is highly recommended!

Victorian Terrace | 2,243 Sq ft (208.3m²) | Three Storeys | Six Bedrooms | Lounge | Dining Room | 18ft Kitchen/Diner | Bathroom | East Backing Decked Terrace | Well Presented | Period Features | Great Location | GCH & DG | Freehold | Council Tax Band D | EPC Rating: D



Offers Over £500,000

IMPORTANT NOTE: These particulars and the descriptions and measurements herein do not constitute representation and whilst every effort has been made to ensure accuracy, this cannot be guaranteed.

